



GUTEX Thermosafe®

TECHNICAL DATA SHEET

Bulk density (kg/m ³)	160
Vapour diffusion factor (μ)	5
Specific heat capacity (J/kgK)	2100
Nominal thermal conductivity λ _D (W/mK)	0.038
Compressive stress/strength (kPa)	50
Air flow resistivity (kPas/m ²)	100
Fire reaction Euro Class as per EN 13501-1	E
Dry manufacturing technique with designation	WF-EN13171-T4-CS(10/Y)50- MU5-AFr100



GUTEX Thermosafe is a multi-ply laminated wood fibre insulation board with excellent insulation properties for roofs and exterior walls.



Composition

- > Manufactured from untreated Black Forest spruce and fir
- > Additives
- > 4.0 % white glue is used for the lamination of multiple plies

 **GUTEX** Thermosafe®**TECHNICAL DATA SHEET**

Joint type	Butted				
Thickness (mm)	40	60	80	100	120
Length x width (mm)	1200 x 625				
Square metres per board (m ²)	0.75				
Weight per board (kg)	4.80	7.20	9.60	12.00	14.40
Weight per m ² (kg)	6.40	9.60	12.80	16.00	19.20
Boards per pallet	112	68	56	42	36
Square metres per pallet (m ²)	84.00	51.00	42.00	31.50	27.00
Weight per pallet (kg)	570	520	570	520	540
Nominal thermal resistance R _p (m ² K/W)	1.05	1.55	2.10	2.60	3.15
sd-value (m)	0.20	0.30	0.40	0.50	0.60

German disposal category: code number as per AVV:030105; 170201



GUTEX Thermosafe®

Applications

- › Above rafter insulation
- › Between rafter insulation
- › Insulation of top storey ceilings
- › Interior insulation of ceilings, walls, floors or roofs
- › Insulation of wood frame and prefab modular house sections
- › Insulation of solid wood walls and masonry walls (vented facades)
- › Lightweight partition walls

Advantages

- › Optimum thermal insulation
- › Superior thermal storage capacity provides outstanding insulation against heat in summer and cold in winter.
- › Improves acoustic insulation
- › Regulates humidity
- › Water vapour diffusion permeable
- › Quick and easy installation
- › Wood is a sustainable, recyclable natural resource
- › Made in Germany
- › Biologically safe (natureplus® certified)

Verlegehinweise

- › Store and install this product dry.
- › Offset the joints if installing multiple layers.
- › Install with full surface contact to substrate
- › Avoid cross joints.
- › Do not exceed board thickness of 60 mm under wet screed. For further floor constructions, see GUTEX Thermosafe-wd and GUTEX Thermofloor.
- › For best cutting results, use GUTEX blades for jigsaws or circular saws and a vacuum fitting.
- › Vacuum off the dust in accordance with applicable workplace safety regulations or practices.
- › Fasten the board after placing it in position and immediately cover it for protection (depending on application with e.g. GUTEX Multiplex-top or Thermowall).

GUTEX Thermosafe®

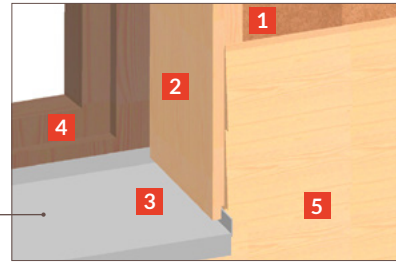
Vented Facade Detail

Reveal



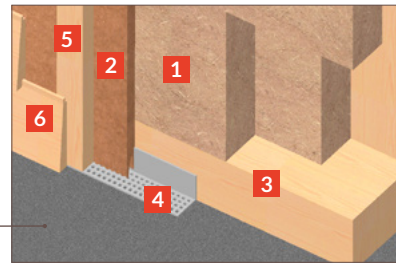
- 1** GUTEX Thermosafe
- 2** GUTEX Multiplex-top/GUTEX Ultratherm/
GUTEX Multitherm
- 3** Sealing strip
- 4** Window jamb
- 5** Cross battens/Venting
- 6** Timber cladding

Window Sill



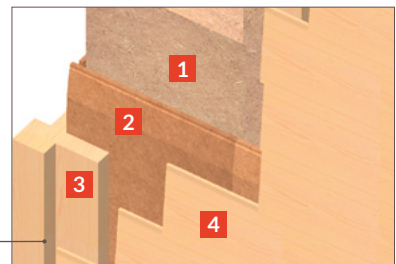
- 1** GUTEX Multiplex-top/GUTEX Ultratherm/
GUTEX Multitherm
- 2** Window jamb
- 3** Window sill
- 4** Window frame
- 5** Timber cladding

Foundation/Wall

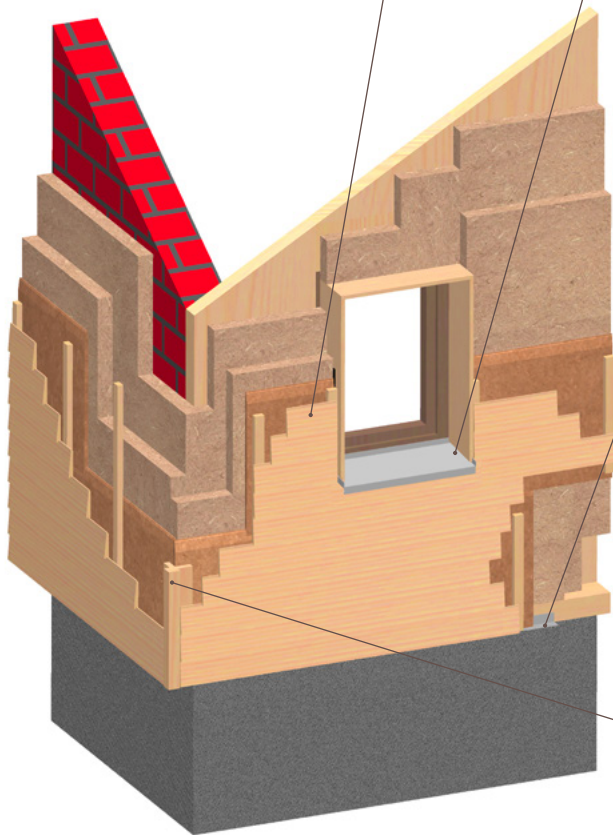


- 1** GUTEX Thermosafe
- 2** GUTEX Multiplex-top/GUTEX Ultratherm/
GUTEX Multitherm
- 3** Plate
- 4** Air grate
- 5** Cross battens/Venting
- 6** Timber cladding

Corner/Wall



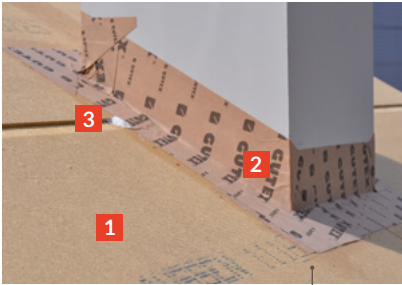
- 1** GUTEX Thermosafe
- 2** GUTEX Multiplex-top/GUTEX Ultratherm/
GUTEX Multitherm
- 3** Corner bead
- 4** Timber cladding



GUTEX Thermosafe®

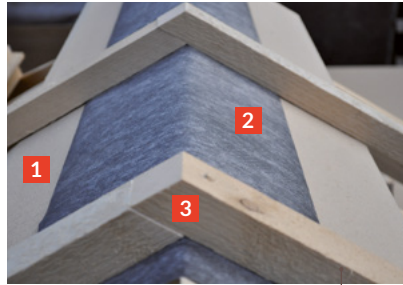
Above Rafter Insulation Detail

Roof Interruptions



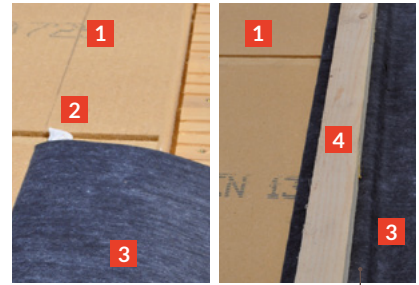
- 1 GUTEX Multiplex-top/
GUTEX Ultratherm
- 2 GUTEX Joint Sealing Kit
- 3 GUTEX Sealing Caulking

Ridges

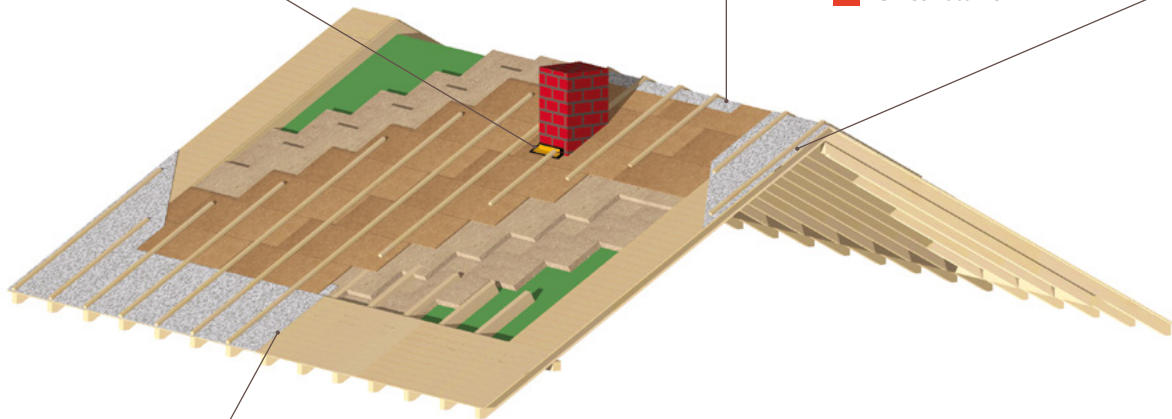


- 1 GUTEX Multiplex-top/
GUTEX Ultratherm
- 2 Vapour permeable roofing felt
- 3 Cross battens

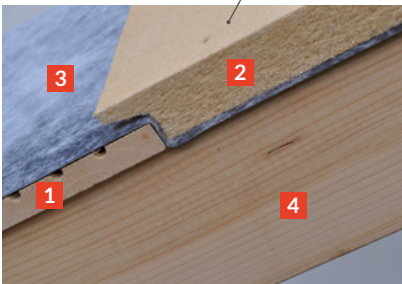
Gable Ends



- 1 GUTEX Multiplex-top/
GUTEX Ultratherm
- 2 GUTEX Sealing Caulking
- 3 Vapour permeable roofing felt
- 4 Cross battens



Eaves Variation 1



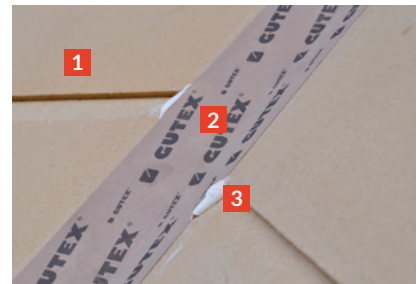
- 1 Sheathing of exterior overhang
- 2 GUTEX Multiplex-top/
GUTEX Ultratherm
- 3 Vapour permeable roofing felt
- 4 Cross battens

Eaves Variation 2



- 1 GUTEX Multiplex-top/
GUTEX Ultratherm
- 2 Vapour permeable roofing felt
- 3 Cross battens
- 4 Cross battens

Valleys



- 1 GUTEX Multiplex-top/
GUTEX Ultratherm
- 2 GUTEX Joint Sealing Kit
- 3 GUTEX Sealing Caulking



GUTEX Holzfaserplattenwerk

Gutenberg 5 | 79761 Waldshut-Tiengen | Germany
Phone: +49 7741/6099-0 | www.gutex.de | info@gutex.de

*Knowing you've
done the right thing.
That's the
GUTEX effect.*



THE
GUTEX
EFFECT