



GUTEX Thermowall-gf

TECHNICAL DATA SHEET



GUTEX Thermowall-gf is the particularly pressure-resistant, stable plaster baseboard in thicknesses of 40 or 60 mm – ideal for boarding directly over wooden studs in the ecological Thermowall ETICS.

Ingredients

- Untreated fir and spruce
- 4.0 % PUR resin
- 1.5 % paraffin

Disposal

- Waste code numbers as per AVV 030105, 170201

Bulk density ρ [kg/m ³]	~ 185
Nominal thermal conductivity λ_D [W/mK]	0.043
Vapour diffusion μ	3
Compressive stress/strength [kPa]	≥ 150
Tensile strength perpendicular to the surface [kPa]	≥ 20
Short-term water absorption [kg/m ²]	≤ 1
Air flow resistivity [kPa s/m ²]	≥ 100
Specific heat capacity [J/kgK]	2100
Maximum working temperature [°C]	110
Fire reaction Euro Class as per EN 13501-1	E
Product standard	EN 13171
Approval number	Z-33.47-660 Z-33.43-942 ETA-10/0287 ETA-10/0288
Board designation	WF-EN13171-T5-W51,0-DS(70,-)3-CS(10/Y)150-TR20-MU3-AF _r 100





GUTEX Thermowall-gf

Detailed information

Joint type	Tongue and groove			
Thickness [mm]	40		60	
Length × width [mm × mm]	1300 × 600		1800 × 600	2576 × 1176
Actual coverage: Length × width [mm × mm]	1275 × 575		1775 × 575	2551 × 1151
Actual coverage: Square metres per board [m ²]	0.73		1.02	2.94
m ² /Piece(s)	0.78		1.08	3.02
Weight per board [kg]	5.80	8.70	12.00	33.60
Weight per m ² [kg]	7.40	11.10		
Piece(s)/Pallet	108	72	36	18
Square metres per pallet [m ²]	84.24	56.16	38.88	54.52
Weight per pallet [kg]	680		490	680
Nominal thermal resistance R _D [m ² K/W]	0.90	1.35		
sd value [m]	0.12	0.18		

Joint type	Flush-mount				
Thickness [mm]	40	60	40	60	
Length × width [mm × mm]	2600 × 1250		2800 × 1250		3000 × 1250
m ² /Piece(s)	3.25		3.50		3.75
Weight per board [kg]	24.10	36.10	25.90	38.90	41.60
Weight per m ² [kg]	7.40	11.10	7.40	11.10	
Piece(s)/Pallet	24	15	24	15	
Square metres per pallet [m ²]	78.00	48.75	84.00	52.50	56.25
Weight per pallet [kg]	610	640	730	680	730
Nominal thermal resistance R _D [m ² K/W]	0.90	1.35	0.90	1.35	
sd value [m]	0.12	0.18	0.12	0.18	





GUTEX Thermowall-gf

PRODUCT INFORMATION

Areas of use

- Plaster baseboard for Thermowall ETICS for wood and solid construction without rear ventilation

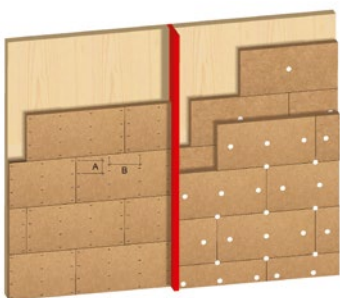
Advantages

- Part of the GUTEX thermal insulation system approved by the building authorities
- Shockproof
- Improvement of sound insulation
- High dimensional accuracy for time-saving and simple installation
- Single-layer, homogeneous bulk density profile
- Optimum thermal insulation
- Outstanding heat storage capacity → good protection from heat in summer and cold in winter
- Moisture-regulating
- Vapour-permeable
- Wood as the sustainable raw material → recyclable
- Manufactured in the direct vicinity of Switzerland (Waldshut, Black Forest)
- Ecologically safe (natureplus® certified)

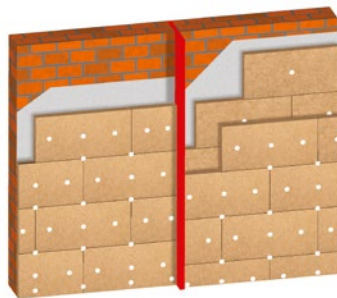
Installation instructions

- For full, detailed instructions on board installation, fastenings, and render application, see the brochure 'Thermowall ETICS, the ecological thermal insulation system'.
- Note the legal requirements for handling wood dust

Assembly over Timber or Masonry

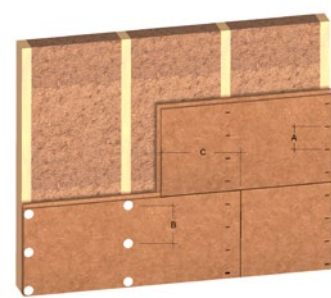


Over Timber Wall



Over Masonry

Assembly in Timber Frame



In Timber Frame

